



Prepared for Story of Place Institute, Littlelobe Productions, and the Resource Center for Raza Planning by Estacia Huddleston
Photo credit: Estacia Huddleston

“ Creative placemaking animates public and private spaces, rejuvenates structures and streetscapes, improves local business viability and public safety, and brings diverse people together to celebrate, inspire, and be inspired. ”

Ann Markusen

CREATIVE PLACEMAKING

Ann Markusen, Markusen Economic Research Services

Anne Gadwa Nicodemus, Metris Arts Consulting

From [Creative Placemaking](#)

- See more at: <http://arts.gov/grants-organizations/our-town#sthash.Ut6fqCnI.dpuf>

Mechanism

COMMUNITY ART & PUBLIC ART

Public Art is a catalyst in some way in all examples in this palette.

“Creativity is a great motivator because it makes people interested in what they are doing. Creativity gives hope that there can be a worthwhile idea. Creativity gives the possibility of some sort of achievement to everyone. Creativity makes life more fun and more interesting.” Edward de Bono

Artists have a unique role in transforming space.

CREATIVITY DRIVES TRANSFORMATION

Art driven placemaking can be transformative.

Placemaking Initiatives in the International District

- Creation Park in the La Mesa Neighborhood
- [International District Trail Project](#)
- Healing Garden at the American Indian Center
- Eagle Nest Garden at the Kirtland Elementary
- Private Mural by Fernando Corona ([video- 1:44](#))
- Albuquerque Public Art

Placemaking has been going on in the international district for some time. These projects are highlight that effort. It is important to acknowledge the work that has been done, so that we can build on community promises and success.

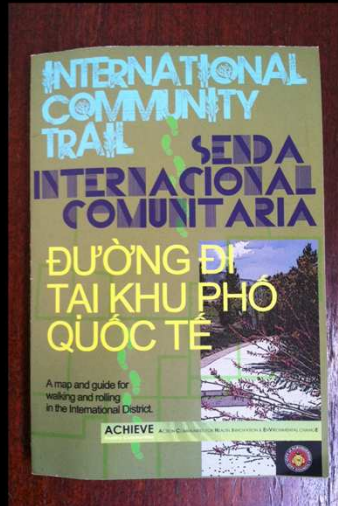
Mural video



Creation Park

ACHIEVE and East Central Ministries partnered to convert a parking lot into a community space for play that has features like murals and sculptural water catchment features designed by local artists. (Artist Richard Brant and Moises Gonzales)

Photo sourced from: Moises Gonzales



[International Community Trail Map](#)

TV spot on ID Trail: Video 2:07

ACHIEVE spot on ID Trail: video 4:21 http://www.youtube.com/watch?v=BIHVqfTri_E



International Trail Scoping Report

Video 2:07



Kirtland Elementary Eagle Nest Garden

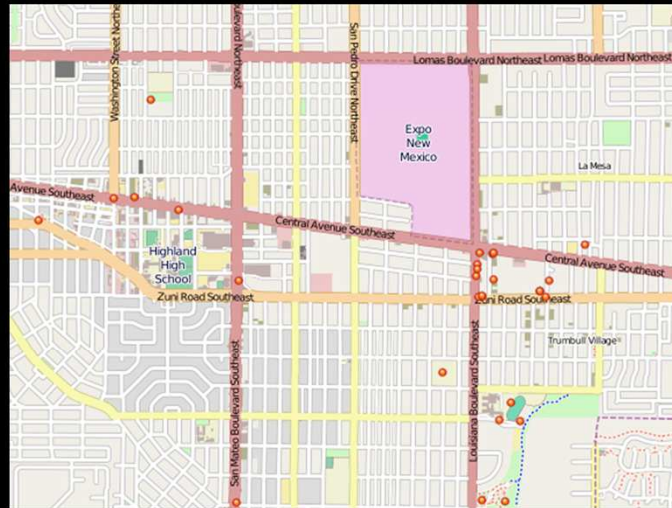
UNM CRP 420 Studio Spring 2012

Video 2:07



Photo sourced from:
https://www.facebook.com/ResourceCenterForRazaPlanning/photos_stream

UNM Students design and build the garden in 2012.



International District Public Art

Building on existing assets: International District Public Art Interactive map details area public art. Orange dots refer to public art on the Albuquerque Public Art Interactive map. Screen shot from: <http://www.cabq.gov/culturalservices/public-art/public-art-in-albuquerque/interactive-public-art-map/>



Cruising San Mateo I

Barbara Grygutis, 1991
San Mateo @ Gibson

International District Pillars

Lori Roddick, 2007
Louisiana @ Central



Some examples of public art in the International District

Lifelines

Leigh Moore/Walters, 1997

San Mateo @ Highland Ave SE



Holes in Our Hearts

Steve Borbas, 2013

Phil Chacon Park

Photos sourced from: <http://www.flickr.com/photos/abqpublicart/>

Mechanism

TACTICAL URBANISM

Short Term Action//Long Term Change

Tactical Urbanism and other place based urban prototypes, happen in the boundaries between citizen engagement, planning and Art

examples in

NEW MEXICO



Parking Day

PARK(ing) Day is an annual open-source global event where citizens, artists and activists collaborate to temporarily transform metered parking spaces into “PARK(ing)” spaces: temporary public places.

Started in San Francisco by Art/planning collaborative ReBar.

Parking Day ABQ 2013

Photo credit: Estacia Huddleston



ReMIKE

A public/private partnership which includes the City of Santa Fe, local businesses, educational institutions and community organizations. Extensive data collection and an urban prototyping festival conducted in 2012 have set the groundwork for exploring opportunities to transform the St. Michael's Drive Corridor.

Photo sourced from: <http://remikeable.com/remike-is/>



Walk Santa Fe

Creative Santa Fe's WALK [Santa Fe] is a month long city prototyping project demonstrating simple, affordable, and practical solutions to increase walkability in Santa Fe. [Video 1:13](#)

Evolving concepts include sit-stations along routes. Photo sourced from Walk Santa Fe Facebook page

CREATIVE PLACEMAKING

- Pop- Ups
- Paint
- Up-cycle
- Electronic Applications
- Community Mapping & Navigation
- Community Platforms



Austin Food Trucks 2012
Photo credit Estacia Huddleston

Placemaking with Pop-ups

- Building Better Blocks
- [Pavement to Plazas](#)
- [Streets For People](#)



Idea is prototyping urban interventions. Artists often lead this process.
Powell St Promenade- A Pedestrian Sidewalk extension in San Francisco, photo credit:
Estacia Huddleston



Team Better Block

Living Charette

Lighter, Quicker, Cheaper- Short term action for long term change. Not designed to be a solution, but a response to lack of place. (Mike Lydon) Testing prototypes
Photo sourced from <http://betterblock.org/>

More Pop-ups

- Parking Day, pedestrian promenades and Parklets
- Little Libraries



Little Libraries support neighborliness and literacy. Small Scale intervention.

Pop-Ups can happen at any scale...

Photo sourced from: <http://littlefreelibrary.org/gallery-of-little-free-libraries/>

More examples:

<http://www.treehugger.com/urban-design/made-in-lower-eastside-miLES-storefront-transformer-pop-up-new-york-city.html>

<http://www.interboropartners.net/2013/rest-stop/>

Placemaking with Paint

- Transformative paint at scale
- Lighter, quicker, cheaper



*Tudo de cor para você, Santa Marta, Rio de Janeiro (photo source: favelapainting.com)
Haas & Hahn*



Philly Painting

A social and artistic experiment of urban acupuncture, beautification, and economic stimulus of unprecedented scale.

<http://www.phillypainting.org/>

“This project is initiated by the City of Philadelphia Mural Arts Program, who employed Dutch artists Haas & Hahn through a residency program to realize a series of giant art interventions in different locations in the city, together with members of a community in North Philadelphia.”



City Repair Intersection Repair

Intersection Repair is the citizen-led conversion of an urban street intersection into public square.

Photo sourced from Cityrepair.org



Mona Caron Manifestation Station

Painting imaginary futures

Creating a Vision of place.
Photo sourced from Monacaron.com

Upcycled Placemaking

- Park Mobiles
- Shipping Container Gardens
- Transformative Architecture



Upcycling re-purposes material into new, better things. One of the things these strategies have in common is the creative re-use of resources in the community.

Garth Britzman

Photos sourced from: <http://www.behance.net/gallery/%28POP%29culture/3874285>



ParkMobiles

Mobile park-ing solution

CMG Landscape architects

Photo sourced from <http://www.missionmission.org/2011/09/07/soma-parkmobiles-profiled-by-the-la-times/>



Frau Gerold's Garden

Zurich Pop-up combines art, play, gardening, shopping and food using shipping containers.

Photo sourced from: <http://www.spiegel.de/fotostrecke/photo-gallery-zurich-s-hipster-heaven-fotostrecke-100085-5.html>



Matthew Mazzotta

participatory public interventions that aim at bringing criticality and a sense of openness to the places we live.

Abandoned house transformed into 100 person public space and performance space.

Placemaking with Water

- [Noel Harding- Elevated Wetlands](#)
- [Michael Bernstein- Ten Yards](#)
- [MARS Architects- The Water Bench](#)
- Depave
- Stacey Levy



Photo sourced from: http://www.land-lab.com/elevated_wetlands.html



Depave

Depave promotes the removal of unnecessary pavement from urban areas to create community green spaces and mitigate stormwater runoff.

Photo sourced from

<https://picasaweb.google.com/DepavePDX/DepavePortlandCommunityCollege#5893068726488314098>



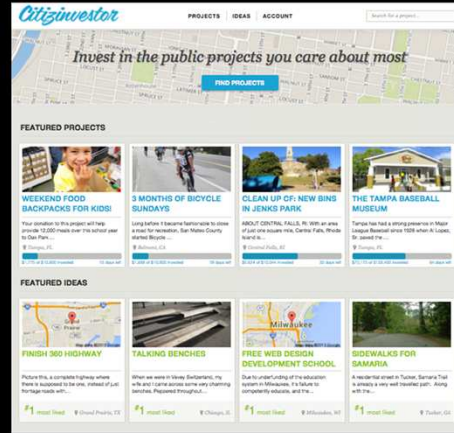
Stacey Levy Dendric Decay Garden

The destructive power of plant roots is harnessed to create different ways to breakdown the remnant industrial hardscape of the park.

http://stacylevy.com/installations/dendritic_decay_garden.php

Electronic Applications for Placemaking

- Digital platforms for idea sharing/doing
- Open-source planning
- Crowdfunding implementation



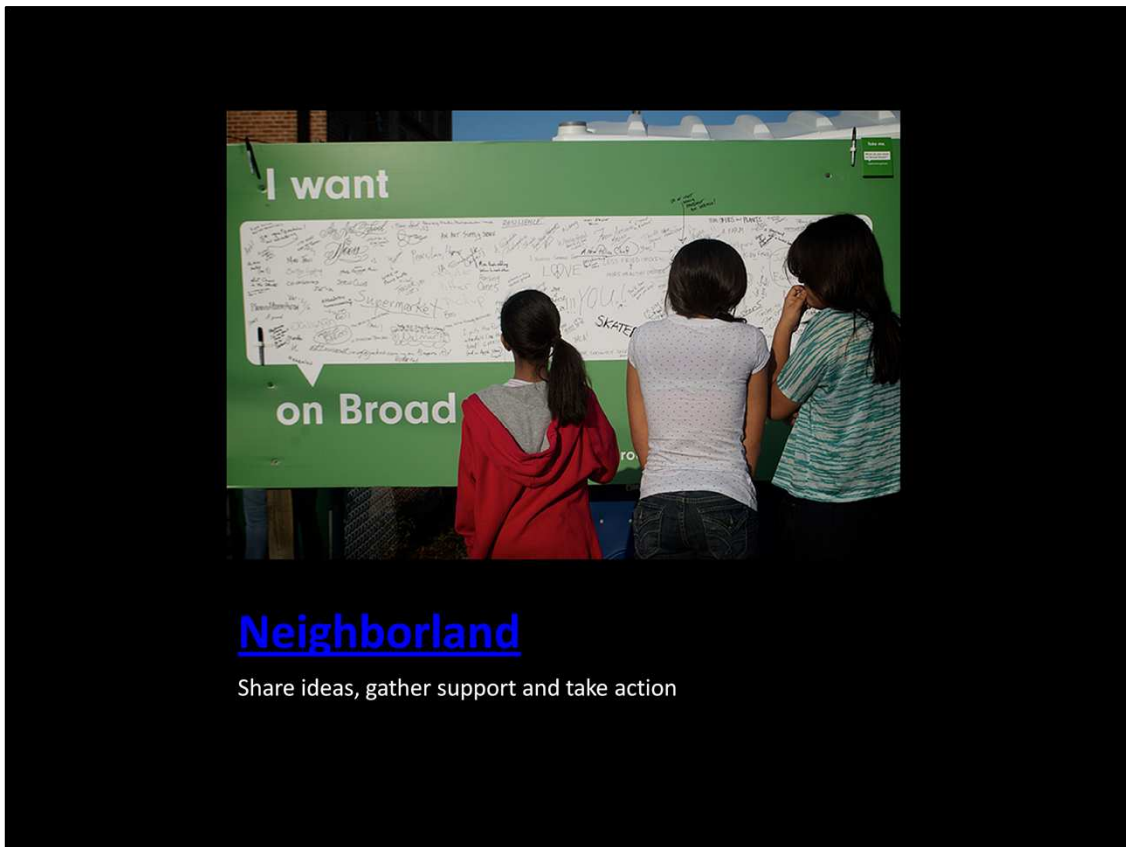


Candy Chang

Making cities more emotional

“Candy Chang is an artist who reimagines public spaces for introspection.” Low tech interventions to high tech connection.

“Making cities more emotional”



Grew from Chang's work...Lo tech and high tech solutions.

“What is Neighborland?”

Neighborland is a new way for residents to collaborate with local organizations to take action on important issues. It's free for residents to share their ideas and insights with organizations. Join the more than 350,000 people and 100 organizations working to make their cities and neighborhoods in the U.S. better”

Crowd-resourcing tools

- [Ioby](#)
- [Citizinvestor](#)
- [Neighbor.ly](#)



[The Hampline](#) features two miles of connected biking and walking paths of public art murals and sculptures, an amphitheater and numerous art galleries, and is crowdfunded on ioby.

“ioby is a crowd-resourcing platform for people who want to make positive change in their own neighborhoods.” <http://ioby.org/>

Photo sourced from: <https://ioby.org/project/hampline>

More on Chicago’s Infrastructure Trust: <http://chi.streetsblog.org/2013/04/17/the-chicago-infrastructure-trust-as-a-way-to-fund-big-public-projects/>

More platforms: <http://www.urenio.org/2012/09/04/fiv-platforms-for-crowdfunding-civic-projects/>

Placemaking with Mapping & Community Navigation

- Hyper-mapping
- Wayfinding
- Community created tours



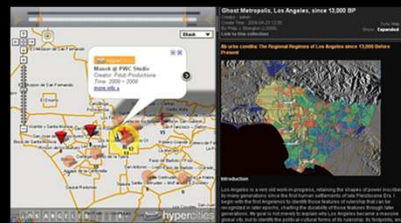
This kind of placemaking can be done low tech and high tech, often the intuition provides the high tech access.

Community Wayfinding in Tucson neighborhood utilized local artists to create navigation point in underutilized roundabout.

Photo credit: Estacia Huddleston

- **Mobile Hi Fi**: “historical excavation through time travel, experienced through the perspectives of immigrants from different time periods. Using GPS-enabled Nokia tablets, users can access audio, photos and maps that comprise these Immigrant’s Guides while walking around the neighborhood.”
- **Ghost Metropolis**: 21st Century Atlas: “is a global history of Los Angeles since earliest human habitation, written in narrative, non-academic prose, presented in print form as a hybrid of textual, cartographic, and photographic representation, in print, online (**HyperCities**), and public art formats. “

Hypercities



A collaborative research and educational platform for traveling back in time to explore the historical layers of city spaces in an interactive, hypermedia environment.

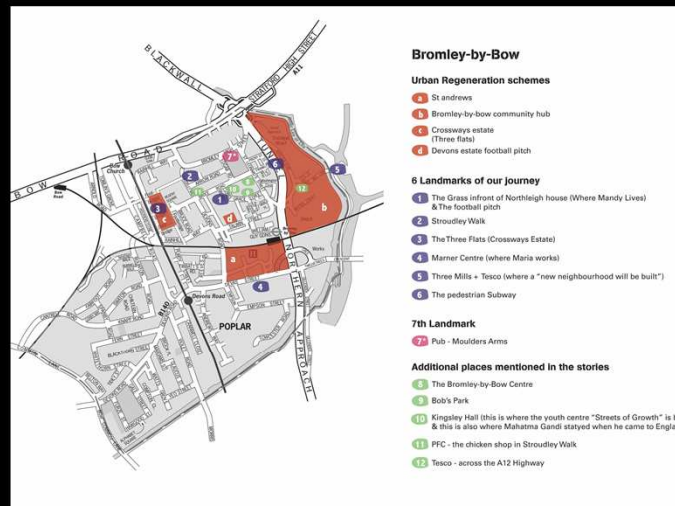
<http://hypercities.com/> “HyperCities is a collaborative research and educational platform for traveling back in time to explore the historical layers of city spaces in an interactive, hypermedia environment.”

Photo sourced from: <http://hypercities.com/pdub/pdub-past/>



Wayfinding is an emerging and often citizen led city intervention that adds to place. Wayfinding can take many forms. Citizens, cities and municipalities can customize their own wayfinding system with online tools. Signs are printed and shipped to your door. <http://walkyourcity.org/>. Walk Raleigh orgin

Creative Santa Fe



MAKE /Shift: Bromley-by-Bow

People and their Space Interacting

“Artist Nina Honiball spent the first few months of 2009 working with the community in Bromley by Bow, in a project that aimed to encourage and enable people to work together to make a visible difference in their environment.

Makeshift is the result of this project - connecting ideas about public art and interventions, participation and community building, and narrative theory. By providing a new way for local people to meet, interact, and think about their environment, Makeshift offers a novel approach to involving the community in decisions that will affect their neighbourhood.” <http://www.bbbc.org.uk/news.php/189/makeshift-project>

“The idea that flows from the human spirit is absolutely unlimited. All you have to do is tap into that well. I don't like to use the word efficiency. It's **creativity**.

It's a belief that every person counts.” Jack Welch

CONTRIBUTORS:

[The Resource Center for Raza Planning at UNM](#)

Professor Moises Gonzales
Estacia Huddleston, MCRP

[Story of Place Institute](#)

Nicholas Mang
Christine Snyder
Joel Glanzberg

[Littlelobe Productions](#)

Valerie Martinez



Email Michael Pride- NEA Cite Our Town-funding support provided by...

Financial Support Provided by:

THE NATIONAL ENDOWMENT FOR THE ARTS

[Our Town Grant, 2013](#)

&

THE MCCUNE CHARITABLE FOUNDATION

Thank you